



**EMERGENCY NUMBER:**  
**+31 (0)77 324 1964**



# **SECURITY RULES AND CODE OF CONDUCT FOR VISITORS AND DRIVERS**

**HUTCHISON PORTS VENLO BARGE TERMINAL**



Welcome to Hutchison Ports Venlo. Our terminal sees many arrivals every day – not just our own employees: various other parties visit the terminal too. That is why security and safety rules are important, both for you and for us. This folder lists and explains the most important rules. Please read it carefully and always observe the rules.

## IN CASE OF INCIDENTS

All accidents, damages and/or incidents, such as leakage of (environmental) 'hazardous substances' must be reported immediately to: Balie Hutchison Ports Venlo



**EMERGENCY NUMBER:**  
**+31 (0)77 324 1964**

**Disclaimer:** Access to the terminal is at your own risk. TCT Venlo BV (acting under Hutchison Ports Venlo) accepts no liability for loss and / or theft of property while you are within the area of the terminals. Keep this information within reach.



# RULES ON THE BARGE TERMINAL

- Wearing a **signal vest and safety shoes** is **compulsory** on the whole terminal.
- Maximum speed in the locks is **10 km**.
- Maximum speed in an operational area is **30 km**.
- **To overtake** the entire terminal is **prohibited**.
- It is only permitted **to turn** when instructed by a Hutchison Ports Venlo employee.
- Driver is obliged **to remain in his own lane**; only at the instruction of a Hutchison Ports Venlo employee may he deviate from it.
- Unnecessary **parking** in the terminal is prohibited.
- **Smoking** and **open fires** are prohibited.
- **Video/photo** recording equipment is prohibited.
- **Dimmed headlights** are required.
- **Vehicles** that are in the '**green zone**' inside the lock are allowed to go to the do-it-yourself desk.
- The **engine** must be switched off inside the lock.
- **Reversing** in the lock is not permitted.
- **Passengers, children and pets** are not allowed in the cabin of a truck. Driver in training is allowed if registered.
- It is forbidden to drive between the stacks.
- Reach Stacker(s) have priority at all times, pass only sign reachstacker driver
- Drivers must remain in the cabin at all times.
- Drivers should **only exit the cabin** when proceedings of the **gantry crane** occur.
- The vehicle may only be exited when indicated by a Hutchison Ports Venlo employee.
- To check empty/full containers and securing the container, a '**green/safe zone**', indicated by Hutchison Ports Venlo, is created at the exit. (See map).
- Commercial vehicles from Hutchison Ports Venlo always take priority over all other traffic
- Reversing during the setting up of a container has to be done when possible.
- It is prohibited to be within the **red zone** of the operating crane section.
- After passing the barrier, drivers must stop behind the **STOP** line and wait for the directions of the Hutchison Ports Venlo employee(s).
- It is not permitted to hold a **mobile phone** whilst driving. The use of a car kit and/or an earpiece is mandatory.
- Keep the terminal clean; throw **waste** into the appropriate bins.
- Keep **entry and exit areas** clear.

# PROCEDURE DRIVER ON THE BARGE TERMINAL

- Before the driver passes through **the barrier**, the driver should:
  - 1). Have the chassis in order.
  - 2). Untie the twist lock.
- Driver passes through the barrier and stops at the **STOP** line (location 01).



- The driver continues on his way at the instructions of the Hutchison Ports Venlo employee(s),
- Once the driver is finished with his visit he can go to the '**green/safe zone**' at the exit to eventually secure the container(s) or check it/them.



- Driver logs out at the outgoing barrier.
- End of visit.

# VISITORS ON THE BARGE TERMINAL

- Park in the designated parking spaces.
- Announce yourself at the porto-cabin to register.
- Wearing a **signal vest** in the whole terminal is obligatory.
- Visitors must follow the mandatory walking route (see map)
- Wearing a **signal vest, helmet, safety shoes** and accompanied by a Hutchison Ports Venlo employee with a walkie-talkie in the **danger zone** underneath the gantry crane are obligatory.
- You have to log out at the end of your visit at the porto-cabin on the barge.

## EXECUTIVE AUTHORITY

Control and enforcement of the rules are made by Hutchison Ports Venlo employees. You should adhere to the instructions at all times.

Hutchison Ports Venlo employees can, if you do not cooperate or do not abide by the rules, remove you and deny you access to the Hutchison Ports terminals.

## SANCTIONS

All violations within the BVR are registered by Hutchison Ports Venlo. Measures will be taken for repeated or serious violations. A (temporary) terminal ban is something that you could consider as a consequence.

## OPENING TIMES

Hutchison Ports Venlo (Rail Terminal)

Celsiusweg 30

5928 PR Venlo

Monday open: 05:00 am

To saturday: 12:00 pm (24 hours)

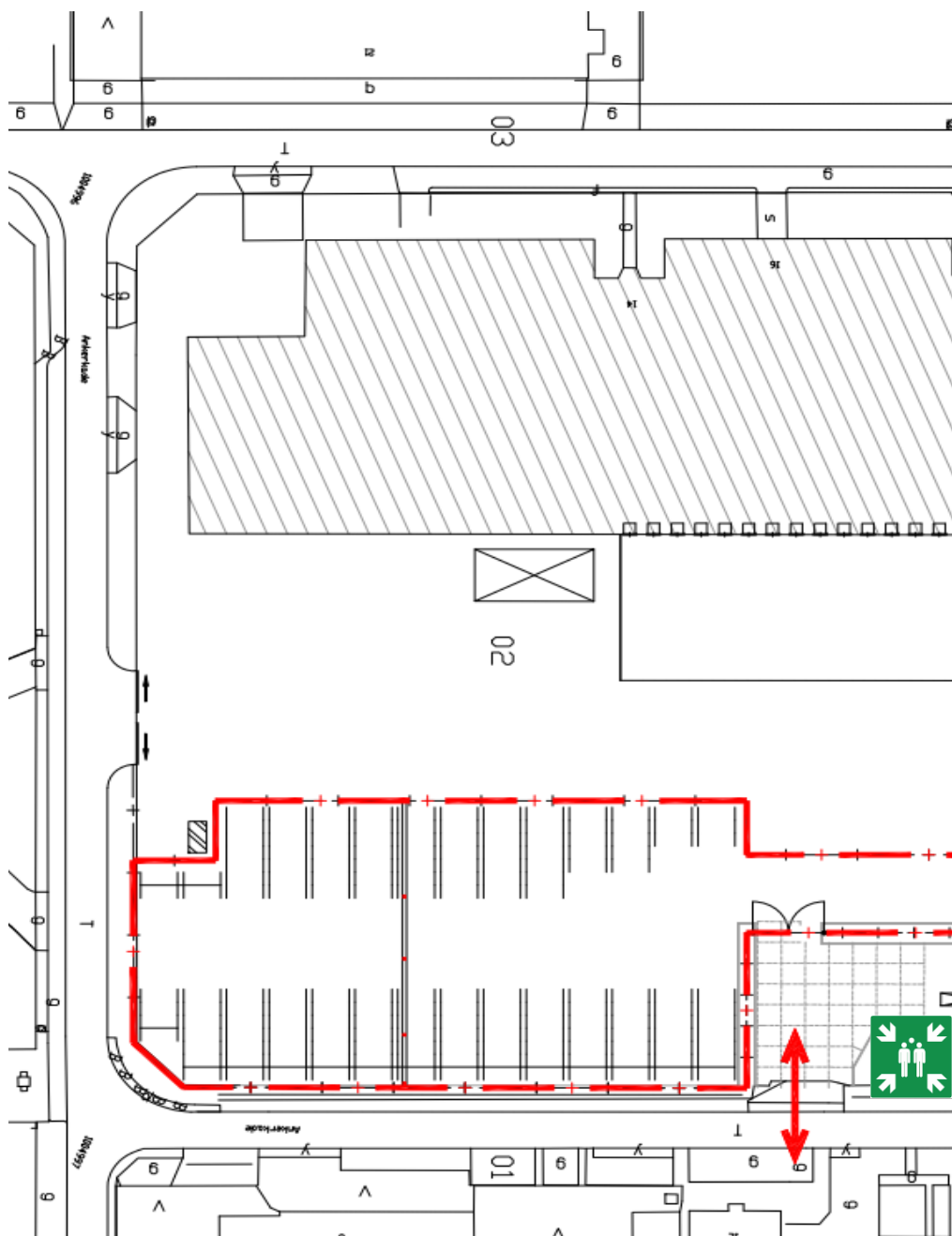
Hutchison Port Venlo (Barge terminal)

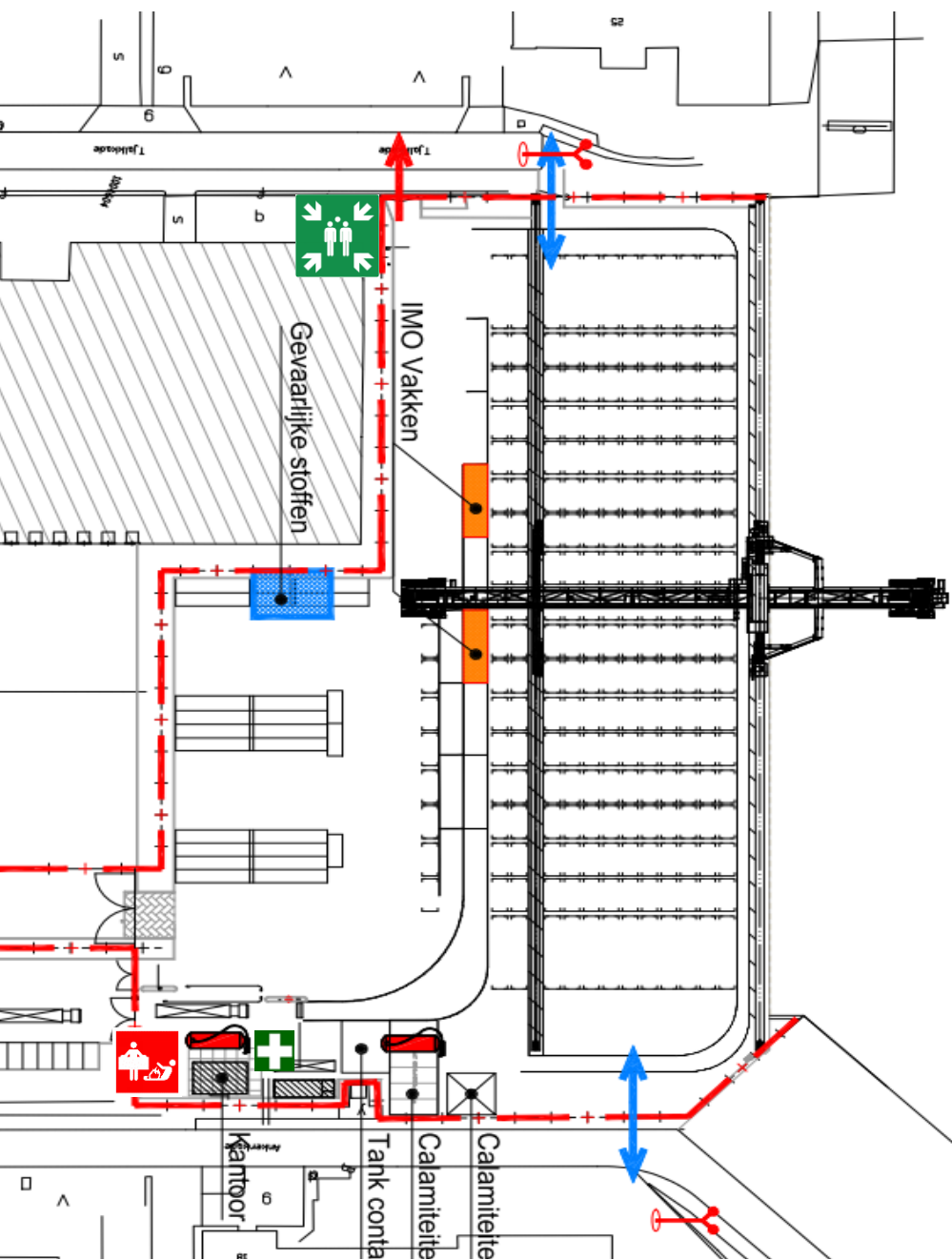
Ankerkade 7

5928 PL Venlo

Monday open: 05:00 am

To saturday: 07:00 pm (24 hours)





Hutchison Ports Venlo  
Postbus 3260  
5902 RG Venlo-Blerick  
+31 (0)77 324 1964

[www.hutchisonportsvenlo.com](http://www.hutchisonportsvenlo.com)

JET/12-2018/ENG/500ex.

